

Backing up and Restoring ShowGo Data



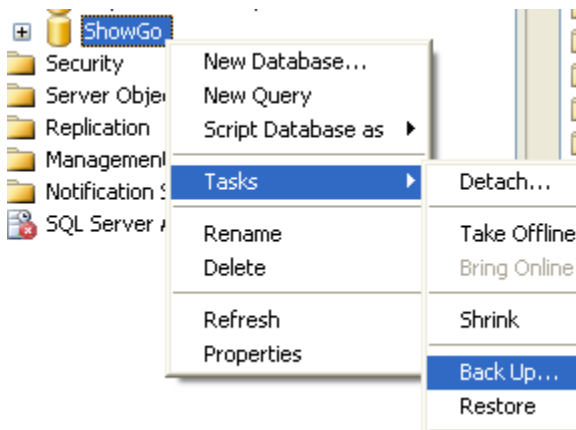
These instructions will describe how to back up existing ShowGo data and then restore it. Use these steps when you would like to move data from a single-user computer to either another computer, or to the network


Backing up Your ShowGo Data

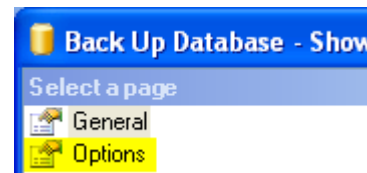
These instructions will show you how to back up your existing ShowGo data. After backing up the data you may want to save it on a network folder, a flash drive or CD to transfer to the second location (the network or different computer).

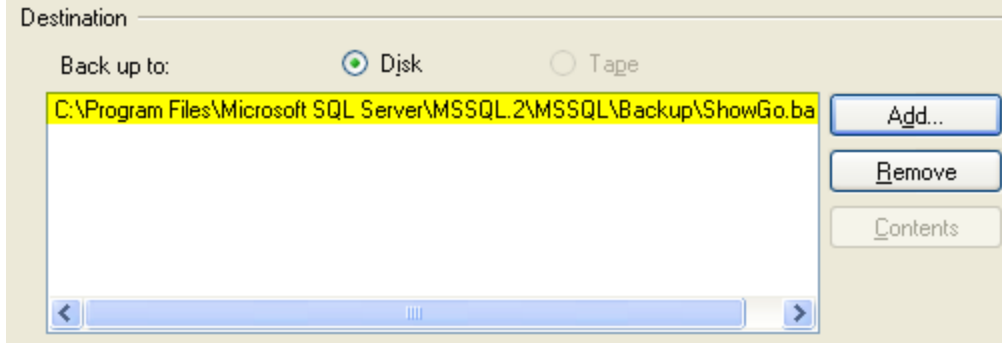
This is to be performed where the ShowGo data resides – usually the user’s computer.

1. Open **Microsoft SQL Server Management Studio (Express)**
2. Click **Connect**
3. Expand **Databases**
4. Right-click **ShowGo**
5. Select **Tasks > Back Up...**



6. Pay special attention to the **Back up to:** path (highlighted below). You will need to locate this path in the following steps.
 - a. If you want to change this path:
 - i. Click **Remove**
 - ii. Click **Add**
 - iii. Click the **ellipses button**: 
 - iv. **Browse** to where you want it saved
 - v. Enter **ShowGo.bak** in **File Name**
 - vi. Click **OK**, Click **OK** again
 - vii. Click **Options** in the top-left part of the form (*image to right*)
 - viii. Check **'Overwrite all existing backup sets'**
 - ix. Click **OK** to back up your data





7. Close **SQL Server Management Studio Express**
8. Open **My Computer**
9. **Browse** to the **Back up to:** location in *Step #6*
10. **Save ShowGo.bak** to a network folder, a flash drive or CD to transfer to the second location (the network or different computer).

Restore the ShowGo Database (ShowGo.bak)

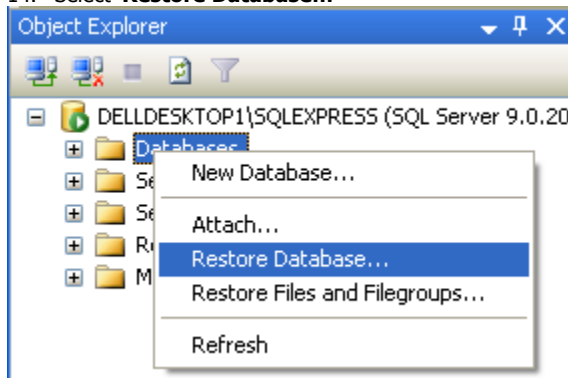
These instructions will show you how to restore the ShowGo database. You will need access to ShowGo.bak from the previous instructions (above).



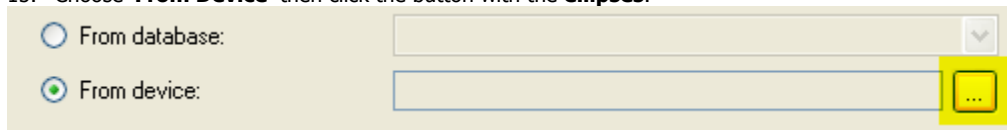
This is to be performed where you would like the ShowGo data to reside (the network or different computer).

Restore the new database

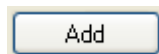
11. Open **Microsoft SQL Server Management Studio (Express)**
12. Click **Connect**
13. Right-click on **'Databases'**,
14. Select **'Restore Database...'**



15. Choose **'From Device'** then click the button with the **ellipses**.

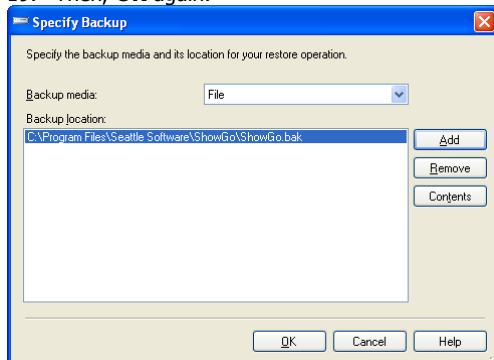


16. Click **'Add'**



17. Browse on your computer for: **ShowGo.bak**
 - a. Refer to **Step #10** above.
18. After you have located **ShowGo.bak**, select it, then click **OK**

19. Then, **OK** again.



20. Click the **checkbox** to **restore** the database

Select the backup sets to restore:

Restore	Name	Component	Type	Server	Database
<input checked="" type="checkbox"/>	ShowGoNet-Full Database Backup	Database	Full	WORKLAPTOP	ShowGo

21. Select **ShowGo** in the 'To database' field.

Source

Database: ShowGo

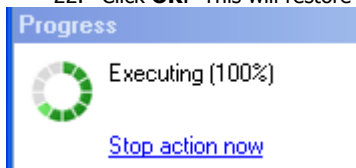
Recovery model: msdb

Backup type: ReportServer

ReportServerTempDB

ShowGo

22. Click **OK**. This will restore the database.



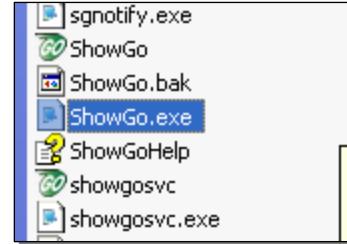
23. Finally, if the data is placed on the network, be sure to configure the connection string on the user's computer to point to this new location. (next page)

Configure Connection String

Client Only

On each **Client**:

- Browse to: **C:/Program Files/Seattle Software/ShowGo**
- Right-click on **ShowGo.exe.config**, may be displayed as **ShowGo.exe** (CONFIG file) (screenshot to right)
- Select **Open With...**,
- Select **Note Pad**



- Look for this section, approx 16 lines from the top in Notepad using full screen and Word Wrap:

```
<connectionStrings>
→ <add name="ShowGoNet.DataAccess.Properties.Settings.conn" connectionString="Data Source=localhost;Initial Catalog=ShowGo;Integrated Security=SSPI" />
  <add name="ShowGoNet.DataAccess.Properties.Settings.ReplicLocalConn" connectionString="Data Source=localhost;Initial Catalog=ShowGoLocal;Integrated Security=SSPI" />
  <add name="ShowGoNet.DataAccess.Properties.Settings.ReplicServerConn" connectionString="Data Source=localhost;Initial Catalog=ShowGo;Integrated Security=SSPI" />
</connectionStrings>
```

Zoomed In:

```
tionString="Data Source=localhost;Initial Catalog=Sh
;Conn" connectionString="Data Source=localhost;Initial
Conn" connectionString="Data Source=localhost;Initi
```

- Change the Data Source from 'localhost' to **Server Name or IP Address**
 - Where **Server Name** or **IP Address** is of the computer hosting the database

Using more than one Instance of SQL?

If you have more than one instance of SQL on this server, then you must use **Server\Instance** instead of just Server Name or IP Address.

- Change the Data Source from 'localhost' to **Server|Instance**.
 - Where **Server** is the **Server Name** or **IP Address** of the computer hosting the database and **Instance** is the name of the SQL instance you want to connect to. If you have used the default named instance during SQL Server setup, specify the instance as **"SQLEXPRESS"**.