

## Create a new SQL login

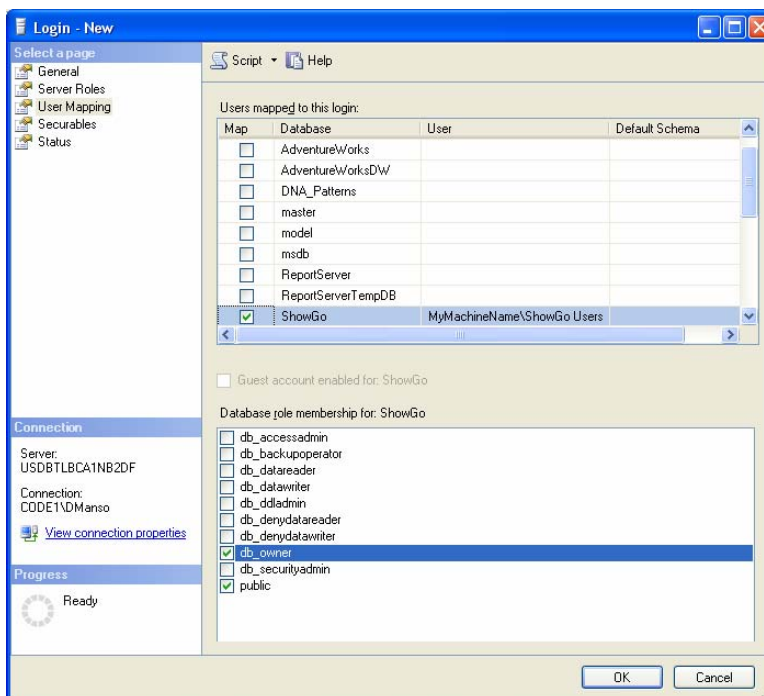
To create a SQL login we need to do two things:

1. Create a new login
2. Configure the connection string on Client machine



## Create a new login

1. Open **SQL Server Management Studio Express**
  - a. Start > Programs > Microsoft SQL Server 2005 > SQL Server Management Studio Express
2. Click **Connect**
3. Expand **Security**
4. Right-click **Logins**
5. Select **New Logins**
6. In **Login name**, Enter **ShowGoUser**
7. Choose **SQL Server authentication**
8. **Enter** and **re-enter** a password (we suggest: **tradeshows**) (*write it down*)
9. Click the '**User Mapping**' node on the upper, left pane and make the choices as shown below:
  - a. Check **ShowGo** in the **Database** column
  - b. Check **db\_owner** in the **Database role membership for: ShowGo**



10. Click **OK** and then **OK** to finish adding the group to the SQL server Login.

## Configure the connection string on Client machine

1. On the Client machine locate **ShowGo.exe.config**
  - a. Browse to: C:\Program Files\Seattle Software\ShowGo
2. Open file with Notepad
  - a. WinXP: Right-click > Open With > Notepad

- b. Win2K: Right-click > Open > Choose Program > Notepad
3. Press Ctrl + F (Find) **'source='**
4. The area of code should look like this:

```
"Data Source=localhost;Initial Catalog=ShowGo;Integrated Security=SSPI" />
```

5. Edit the code to look similar to this:

```
"Data Source=localhost;Initial Catalog=ShowGo;User=ShowGoUser;Password=tradeshows" />
```

Note:

- If installing on a single Client machine, localhost remains localhost.
  - If installing on a network, localhost is replaced by the server name
  - *tradeshows* is the password entered in Step 8 above.
6. After making the changes, click File > Save
  7. Open ShowGo